

5. STUDY TEAM AND RESOURCES

For this study we have assembled an experienced study team drawn from the resources of WS Atkins and ANCER SPA. It is proposed that a core team of experienced professionals should be responsible for undertaking the study supported by junior staff as necessary. The proposed study team organisation is illustrated in Figure 5.1.

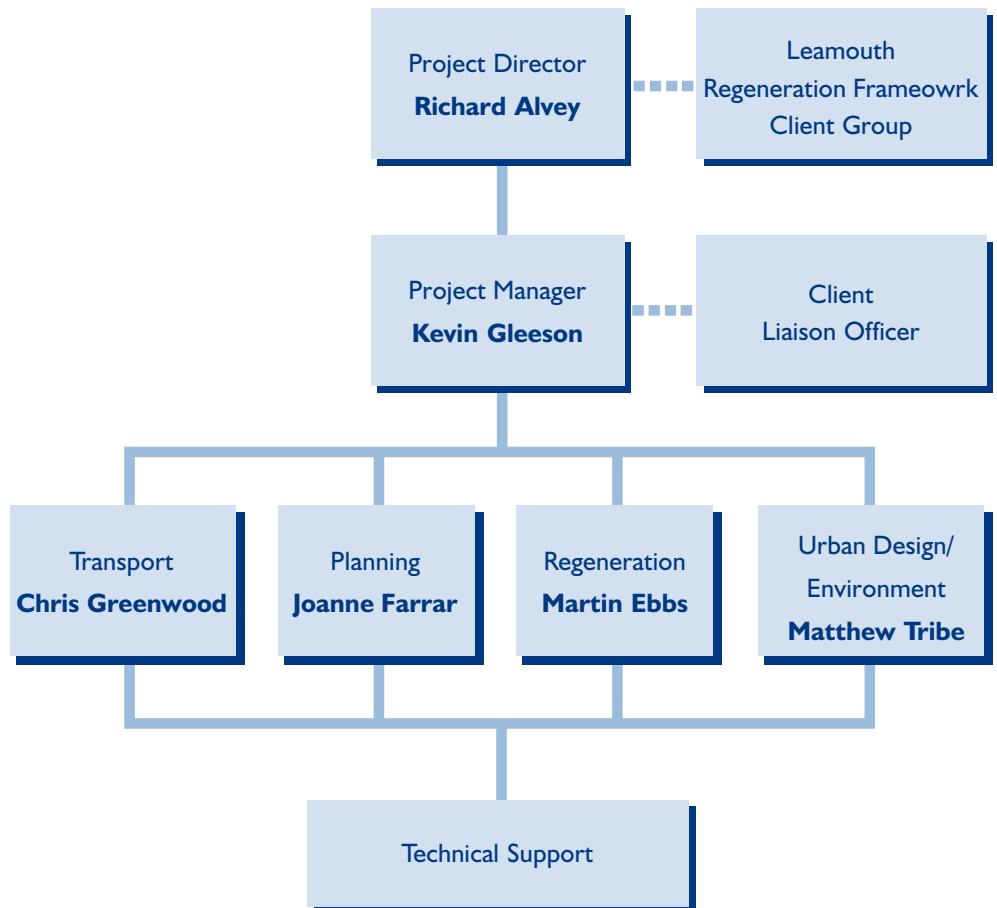


FIGURE 5.1 Study Team Organisation

The nominated Project Director is **Richard Alvey**. Richard is Director of Planning, Landscape and Urban Design. He has extensive experience in urban regeneration and redevelopment schemes. He has recently directed the Tower Hamlets Street Design Guide, the Bethnal Green Area Improvements and the Thames Strategy Kew to Chelsea. He has been responsible for a number of regeneration studies including North Camp Farnborough, and the preparation of masterplans for major residential developments in Lincoln and Ashford. He is urban design team leader for the World Squares Masterplan Phase I at Trafalgar Square and has led town centre enhancement schemes for Wandsworth Ludlow and Cirencester.

The nominated Project Manager is **Kevin Gleeson**. Kevin is a Principal Consultant who rejoined WS Atkins in 1999. For the previous 11 years he worked in local government mainly at Westminster City Council. Whilst at Westminster, Kevin was involved in managing a variety of planning and environmental studies including the World Squares Masterplan and the Millbank Area Study. He has considerable experience in relation to the integration of planning and

LEAMOUTH Regeneration Framework

transport proposals. Kevin was project manager for the Thames Special Policy Area study in Westminster and worked on the Thames Strategy: Kew to Chelsea and Thames Gateway Sustainable Transport Strategy. He was also project manager for the North West Westminster Planning Study which considered changes to planning policies to assist regeneration including the potential of live/work developments.

The other key team roles are:

Access /Transportation	Chris Greenwood
Regeneration	Martin Ebbs
Planning	Joanne Farrar
Environment/ Urban Design	Matthew Tribe

Chris Greenwood is a Senior Consultant with 11 years experience in fields of transport planning and traffic engineering and currently manages our urban regeneration / town centre traffic management team. Chris has particular expertise in undertaking urban regeneration, town centre and development impact projects and developing schemes where highway capacity is to be reallocated to buses, pedestrians and cyclists. Over the last five years, Chris has managed and been involved in various regeneration and environmental enhancement projects including World Squares for All (Trafalgar Square), Regent Street Traffic Management and Environmental Enhancement, the West End Transport and Environment Study, Shoreham Maritime Regeneration and town centre studies of Wandsworth, Dartford and Stoke Newington. All of these projects have involved the design and assessment of integrated highway and urban design schemes incorporating proposals for general traffic, buses, pedestrians and cyclists.

Martin Ebbs is Executive Director of ANCER SPA and has 17 years experience in development and regeneration consultancy. His experience embraces integrated area regeneration strategies, inward investment strategies, property market research, preparation of funding bids and the setting up of delivery mechanisms. He has been involved in regeneration strategies for London Docklands, Dagenham Thameside, the Lea Valley, East London sub-region and the Thames Gateway. He has prepared regeneration strategies for English Partnerships, Regional Government Offices and RDAs and has advised the private sector on the planning, configuration and marketing of major development schemes.

Joanne Farrar is a Senior Planner who recently joined WS Atkins from the Royal Borough of Kingston. She has 8 years experience of planning, development and implementation projects in both the public and private sectors, including feasibility studies for development briefs, Public and Local Plan Inquiries and local development planning. She was involved in the Royal Borough of Kingston Unitary Development Plan Review from consultation on Issues Papers to First Deposit. At Atkins, Joanne is developing residential design guidance for Elmbridge Borough Council and has advised Wembley plc on representations to the Brent Replacement UDP. Joanne has also worked in Soweto, Johannesburg where she was involved in preparing a Local Development Plan and Area Action Plans.

Matthew Tribe is a principal landscape architect and urban designer. Matthew has recently been lead designer and project manager for environmental improvements to Whitechapel Road Market on behalf of London Borough of Tower Hamlets and Cityside Regeneration Ltd.

LEAMOUTH *Regeneration Framework*

He has also recently worked on the detailed design and contract preparation of landscape and urban design contracts on the Greenwich Peninsula, the new A13 from Junction 30 of the M25 to West of Heathway, which incorporates elements of the London Borough of Barking and Dagenham's A13 Artscape proposals, and the design proposal for the '3rd Millennium Community Bridge' across the River Foyle, Londonderry. Matthew has managed urban design proposals for new communities in Portugal and China.

Curricula vitae of the key study team members are included in Appendix A.